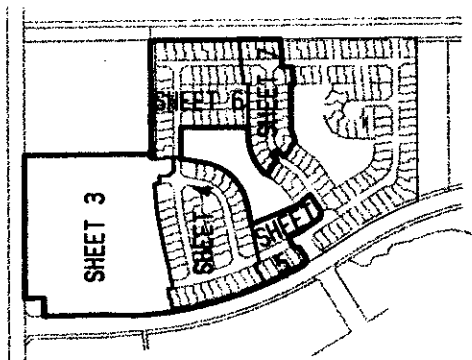


KEY MAP
NOT TO SCALE



JONES - PARCEL "D-2"

A PORTION OF JONES P.U.D., BEING A REPLAT OF TRACT "F" AND TRACT "E", JONES - PARCEL "D" AS RECORDED IN PLAT BOOK 79, PAGES 187 THROUGH 192 OF THE PUBLIC RECORDS OF PALM BEACH COUNTY, FLORIDA, SITUATE IN SECTION 33, TOWNSHIP 45 SOUTH, RANGE 42 EAST, PALM BEACH COUNTY, FLORIDA

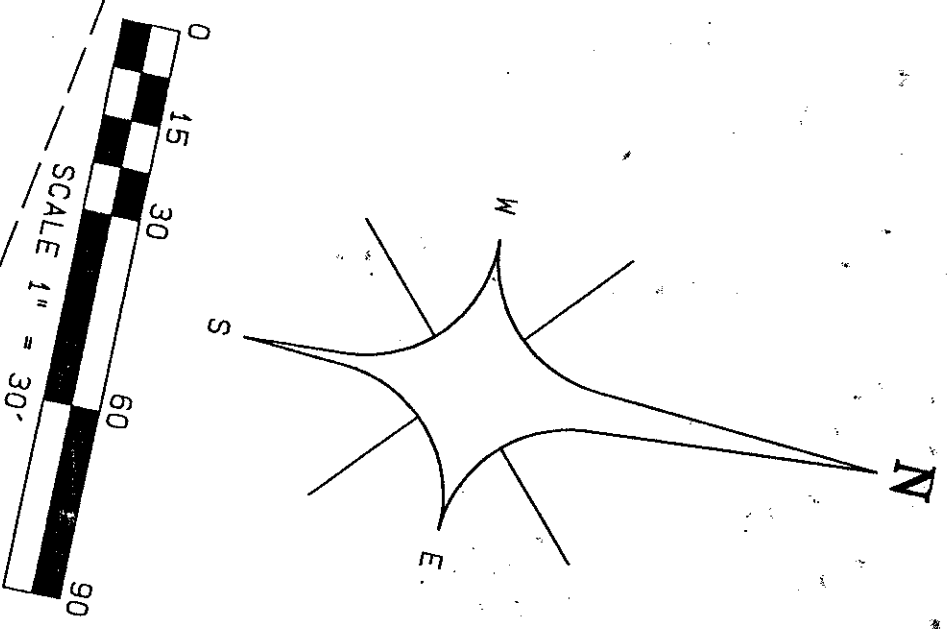
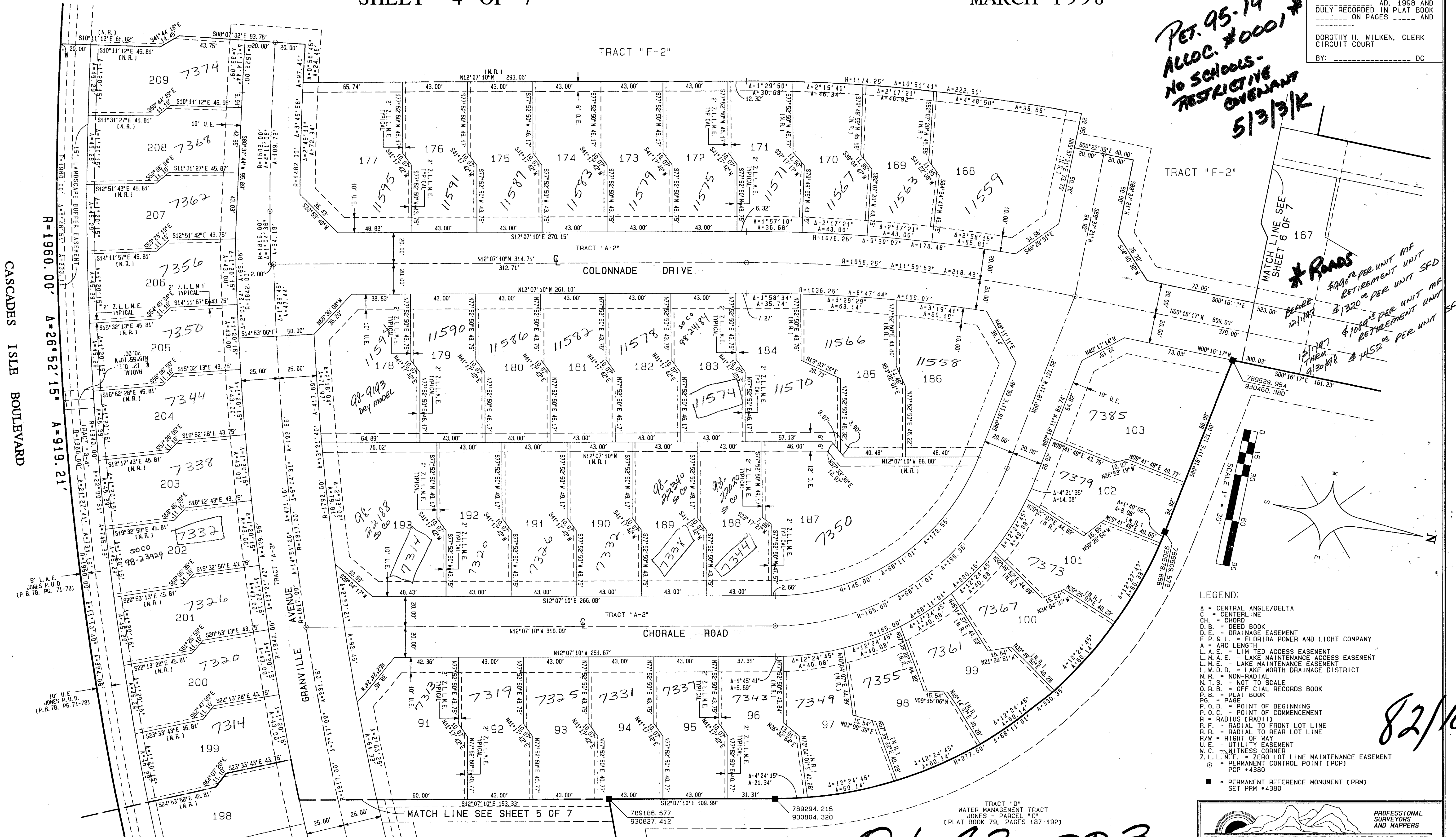
SHEET 4 OF 7

MARCH 1998

STATE OF FLORIDA
COUNTY OF PALM BEACH } SS
THIS PLAT WAS FILED FOR
RECORD AT _____ DAY OF
THIS _____ AD, 1998 AND
DULY RECORDED IN PLAT BOOK
_____ ON PAGES _____ AND

DOROTHY H. WILKEN, CLERK
CIRCUIT COURT
BY: _____ DC

*PET. 95-19
ALLOC. #0001 #
NO SCHOOLS-
RESTRICTIVE
COVENANT
5/3/98*



- LEGEND:**
- A - CENTRAL ANGLE/DELTA
 - CH - CENTERLINE
 - DB - DEED BOOK
 - DE - DRAINAGE EASEMENT
 - FL - FLORIDA POWER AND LIGHT COMPANY
 - A - ARC LENGTH
 - L.A.E. - LIMITED ACCESS EASEMENT
 - L.M.A.E. - LAKE MAINTENANCE ACCESS EASEMENT
 - L.M.E. - LAKE MAINTENANCE EASEMENT
 - L.M.D.D. - LAKE WORTH DRAINAGE DISTRICT
 - N.R. - NON-RADIAL
 - N.T.S. - NOT TO SCALE
 - O.R.B. - OFFICIAL RECORDS BOOK
 - P.B. - PLAT BOOK
 - P.C. - PAGE
 - P.O.B. - POINT OF BEGINNING
 - P.O.C. - POINT OF COMMENCEMENT
 - R - RADIUS (RADII)
 - R.F. - RADIAL TO FRONT LOT LINE
 - R.R. - RADIAL TO REAR LOT LINE
 - R/W - RIGHT OF WAY
 - U.E. - UTILITY EASEMENT
 - W.C. - WITNESS CORNER
 - Z.L.L.M.E. - ZERO LOT LINE MAINTENANCE EASEMENT
 - ⊙ - PERMANENT CONTROL POINT (PCP)
PCP #4380
 - - PERMANENT REFERENCE MONUMENT (PRM)
SET PRM #4380

** Roads
\$900 PER UNIT MF
RETIREMENT UNIT
\$1320 PER UNIT SFD
\$1000 PER UNIT MF
RETIREMENT UNIT
\$452 PER UNIT SFD*

TRACT "D"
WATER MANAGEMENT TRACT
JONES - PARCEL "D"
(PLAT BOOK 79, PAGES 187-192)

ATLANTIC - CARIBBEAN MAPPING, INC.
3062 JOG ROAD GREENACRES, FLORIDA 33467
(561) 964-7884 FAX (561) 964-1959

0683-003

82/108

*PAGE 108
FLOOD ZONE B
ZONING PDD
10-10-98
33437*